

4138

Model 4138 Printer Applicator

New generation pallet labelling machine



L A B E L - A I R E ® . . . L A B E L I N G S O L U T I O N S T H A T A P P L Y

precision

4138

New generation pallet printer applicator - operations up to 120 pallets/hr.



LA 4138 represents the new generation of pallet labelling systems.

The system is designed to print and apply A5 format SSCC labels onto two adjacent faces of a pallet (normally front and side) in accordance with the EAN 128 standard (also on three sides if required). LA 4138 is providing:

- High reliability ■ User menu programming ■ Performance up to 120 pallets/hr.
- Interface to Conveyor PLC ■ Complete Housing for full safety guarding

The Printer/applicator system has been designed to apply both labels with only one stop of the pallet. System is based on a tri-axial movement design which enables quick and accurate positioning of each label. Pallet loads of slightly differing dimensions can be labelled without the need for further adjustment.

The LA-4138 has been designed as a high performance universal machine. The complete unit comprises the Thermo transfer printer system, the tri-axial applicator system, and the Guarding housing with safety switches.

LA 4138 Printer applicator will be interfaced to Conveyor PLC to initiate Print and Apply Label when Pallet in position. After application a Ready signal or Error signal will be sent to PLC to initiate movement of Pallet or other necessary action to clear error.

Option can include a "Missing label detector", and a Barcode scanner, that scans Barcode and detects the presence of the label on the pallet. If any error a second cycle. Additional items which may be incorporated include a "missing label detector", and a barcode scanner which also detects the presence of the label on the pallet, and will initiate a second cycle to compensate if necessary, or a signal to stop the production line.

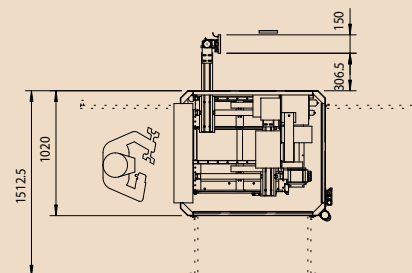
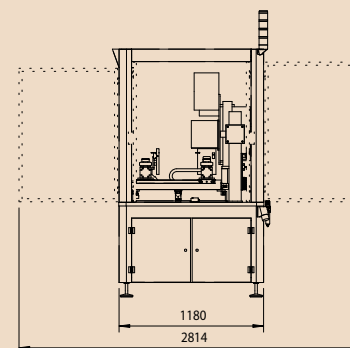
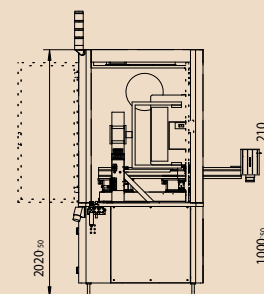


Sjællandsvej 27A
DK-9500 Hobro
Denmark

Tel. (+45) 9657 0063
Fax (+45) 9657 0064
e-mail: info@label-aire-as.com

www.label-aire-as.com

Distributed by:



S P E C S

Dimensions - Standard:

Height: 2.020 mm
Length: 1.270 mm
Width: 1.020 mm

Weight: 120 kg

Standard Label Dimensions:

Label Width: Up to 183 mm
Label Length: Up to 210 mm
(Printer dependent)

Dispense Speed:

Up to 400 mm per second
depending on printer and label size

Label Placement Accuracy: +/- 1,6 mm

Electrical: 230 Volts AC, 50 Hz, 5 Amps.

Air: 100 l/m - 6-8 bar for most applications

I/O Standard:

Programmable relays
Bar code scanner serial out

Alarm lamp: 2 colour light stack

Options:

All O.E.M. print engines
(432 mm) powered unwind
Label on pad detection
Bar code Scanner with Serial out
(Consult factory for additional options.)

Label-Aire also provides a full range of pressure-sensitive labelers, rotary, and inline systems to meet your toughest labeling requirements.

specs